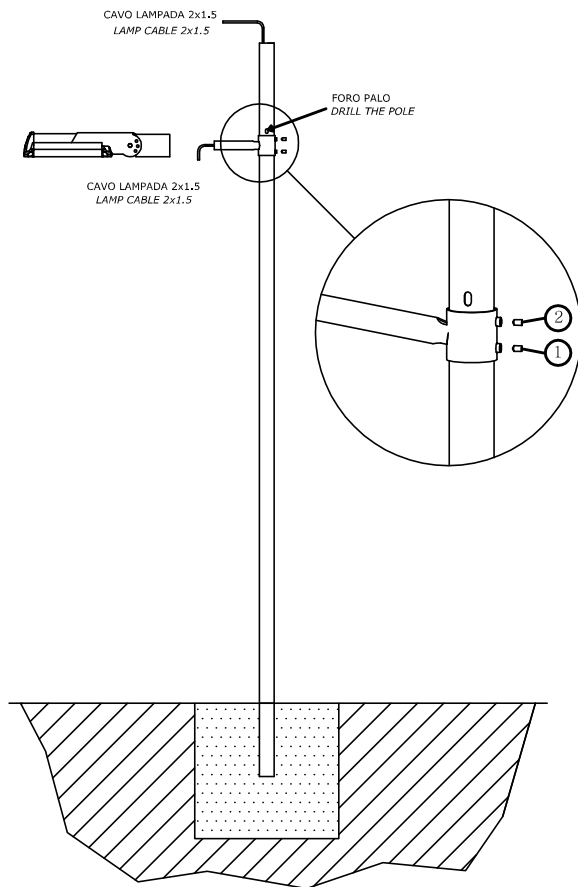
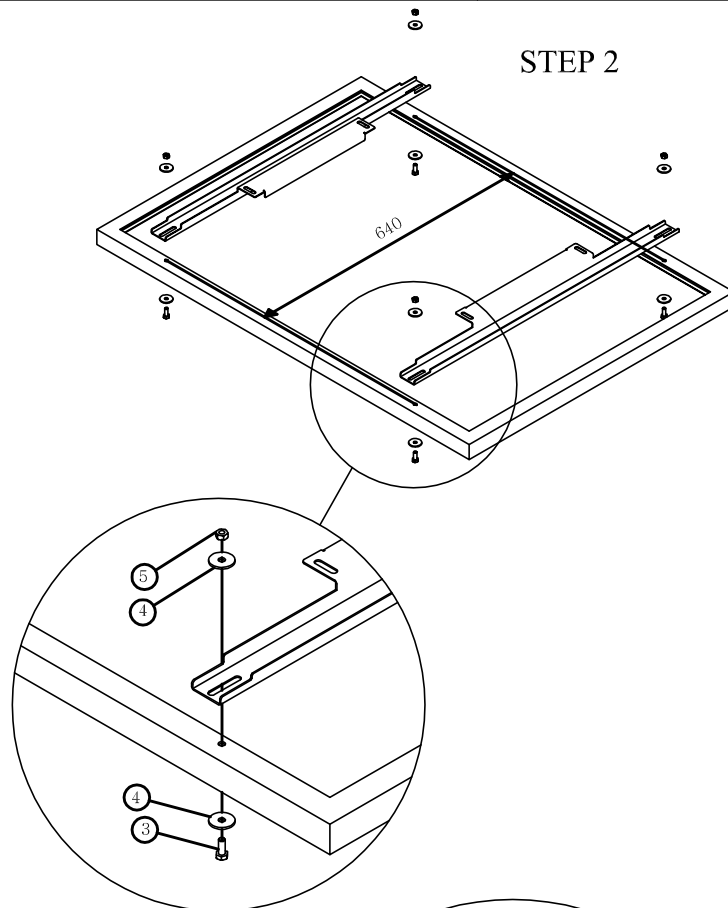


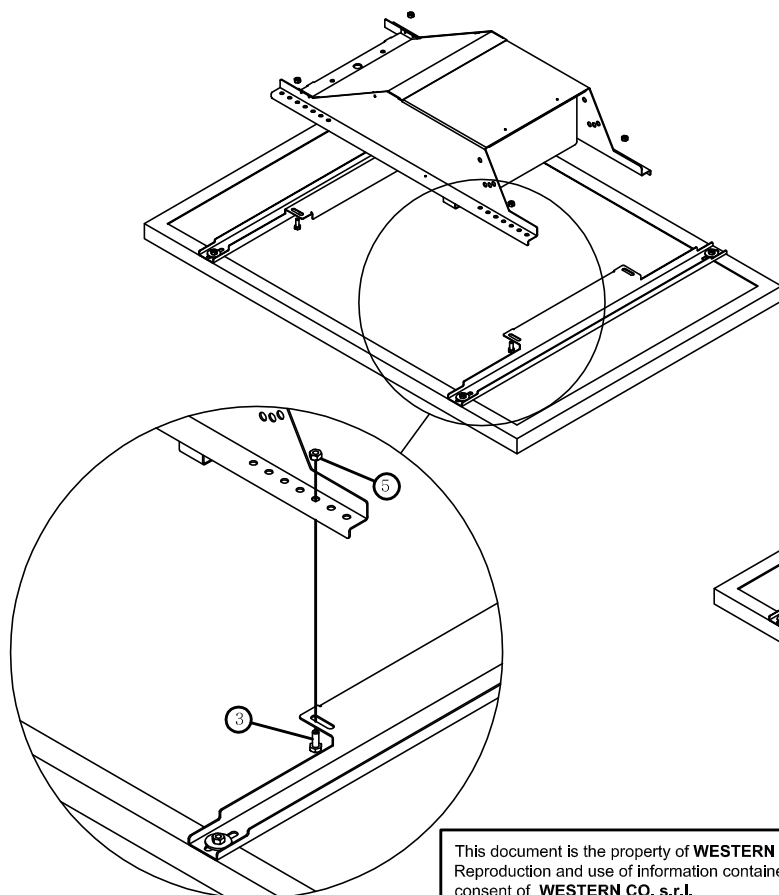
STEP 1



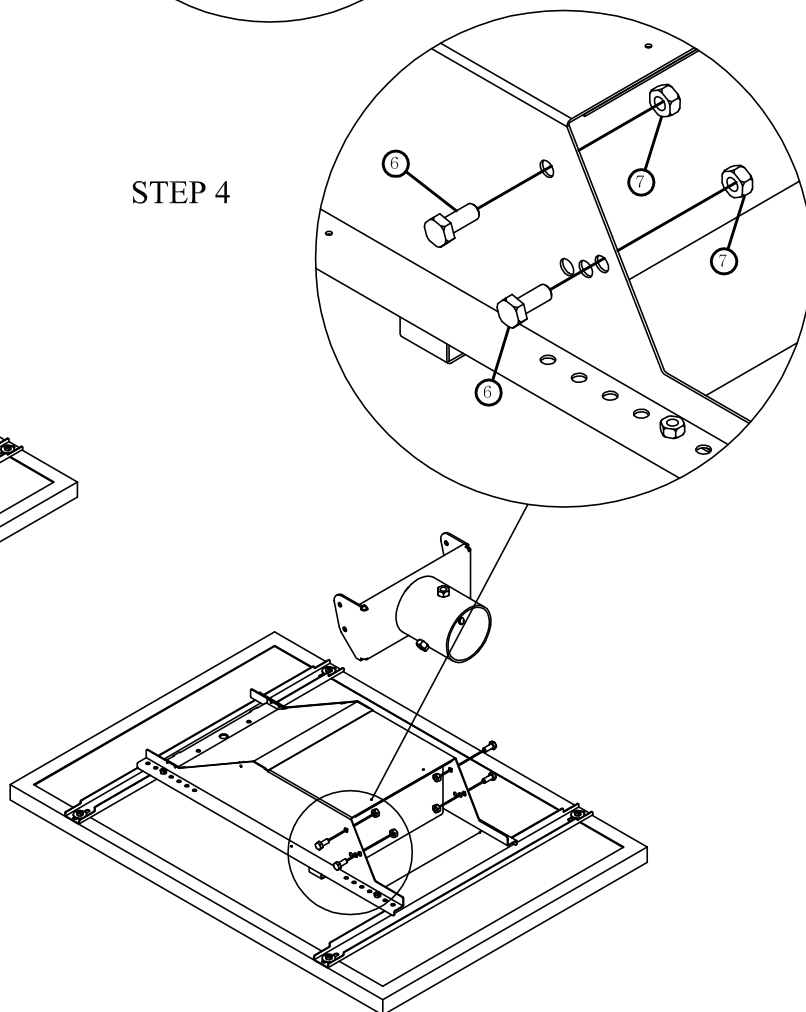
STEP 2



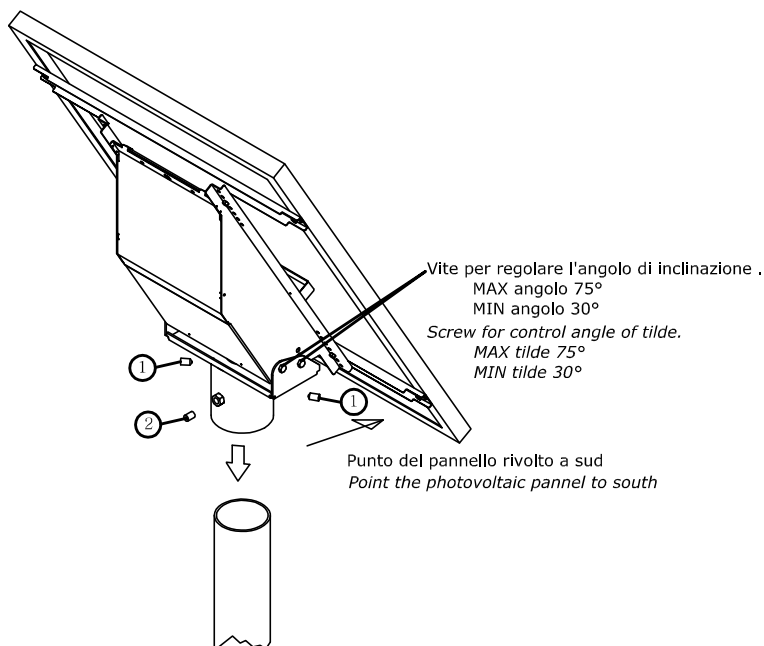
STEP 3



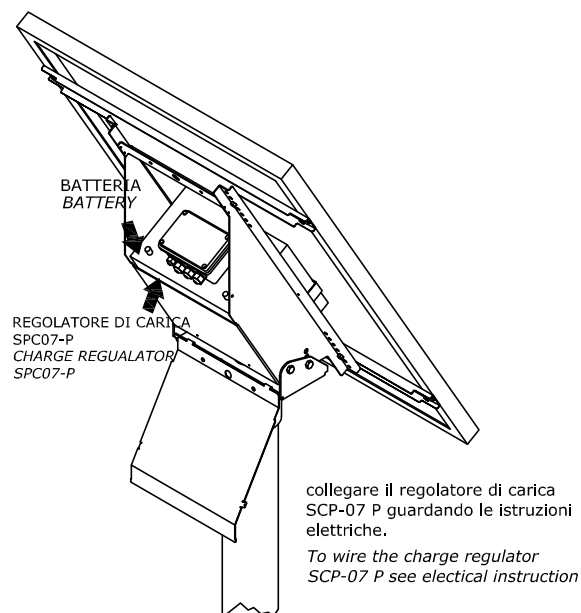
STEP 4



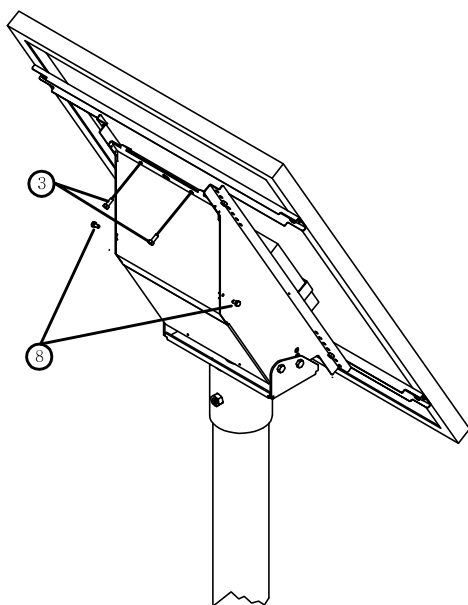
STEP 5



STEP 6



STEP 7



LISTA VITI
SCREWS LIST

| N° | DESCRIZIONE DESCRIPTION | Q.t |
|----|--|-----|
| 1 | Vite senza testa estremo conico M12 x L20 Socket set screw cone point M12 x L20 | 2 |
| 2 | Vite senza testa estremo piano M12 x L20 Socket set screw flat point M12 x L20 | 3 |
| 3 | Vite esagonale flangiata M6 x L16 Hexagonal screw M6 x L16 | 10 |
| 4 | Rondella M6 x D24 Washer M6 x D24 | 8 |
| 5 | Dado esagonale flangiato M6 Hexagonal nut M6 | 8 |
| 6 | Vite esagonale flangiata M8 x L20 Hexagonal screw M8 x L20 | 4 |
| 7 | Dado esagonale flangiato M8 Hexagonal nut M8 | 4 |
| 8 | Vite testa a croce M2.9 x L12 Cross head screw M2.9 x L12 | 2 |

Western CO.
Via Pasubio n°1/3
63074, San Benedetto del Tronto (AP), Italy.
Tel. 0735 751248, Fax. 0735 751254
e-mail info@western.it, Web www.western.it