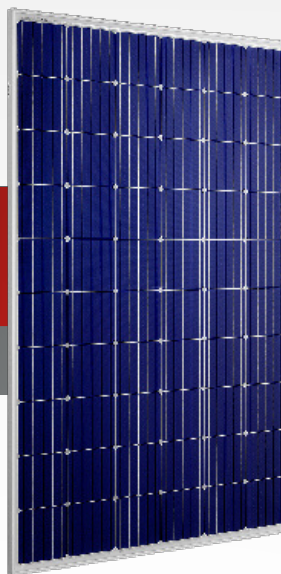


PV Modules [ACCESSORIES]

Code

PV Modules: 015834 (modulo 160Wp)
016390 (modulo 300Wp)



Product features

PV 160 Wp Module



160 Wp power



Standard busbars



1480x670x30mm

[es]

Características del producto



Polycrystalline



Alluminium frame

[de]

Produktmerkmale



36 Cells



Certified according to IEC 61215 and IEC 61730 standards

Product features

PV 300 Wp Module



300 Wp power



5 busbars



1644x992x36mm

[eng]

Características del producto



Monocrystalline



Alluminium frame

[fra]

Produktmerkmale



60 Cells

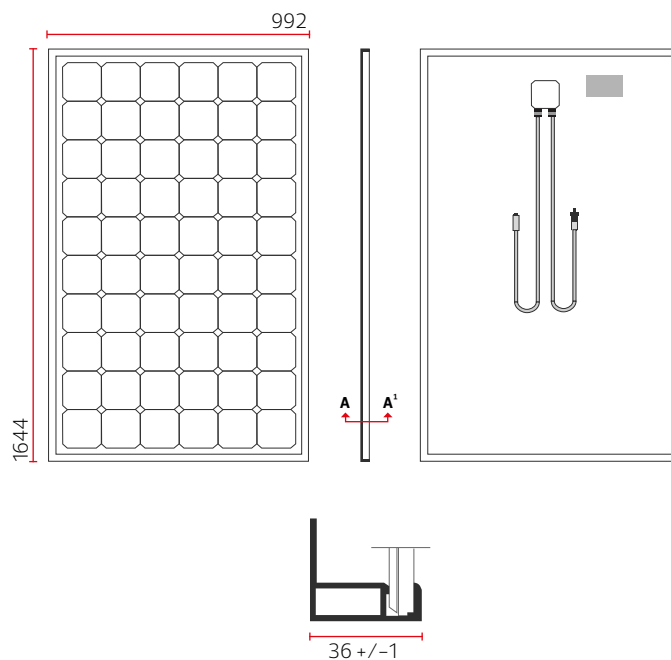
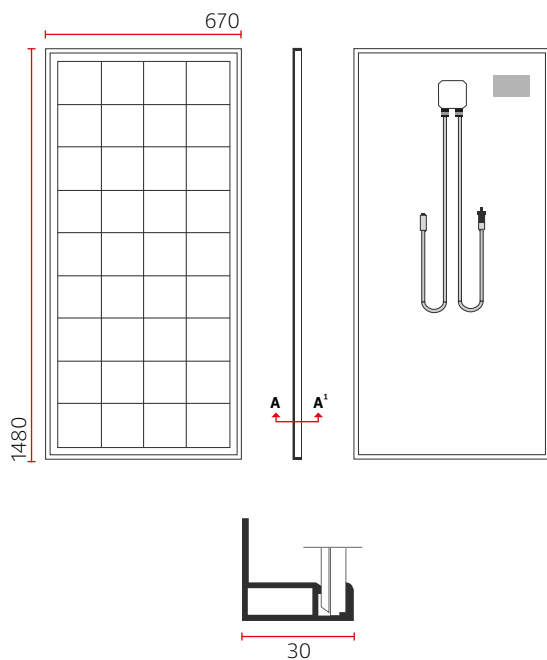


Certified according to IEC 61215 and IEC 61730 standards

Dimensions (mm)

[es] Dimensiones (mm)

[de] Abmessungen (mm)



Electrical specifications

[es] Especificaciones eléctricas

[de] Elektrische Spezifikationen

	WP-FV 160	WM-FV 300
Max power Pmax	160Wp	300Wp
Max power voltage Vmp	18,65V	32,64V
Max power current Imp	8,59A	9,19A
Open circuit voltage Voc	23,00V	39,24V
Short circuit current Isc	9,18A	9,74A
Min warranted power Pmin	160,00Wp	300,00Wp
Working tolerance	-0/+3Wp	-0/+10Wp
Module efficiency	16,10%	18,40%
NOCT	45 ± 3 °C	45 ± 3 °C
Max system voltage	1000V	1000V
Pmax temperature coefficient	-0,36% /°C	-0,40% /°C
Voc temperature coefficient	-0,26% /°C	-0,34% /°C
Isc temperature coefficient	0,06% /°C	0,03% /°C
Mechanical load	5400Pa	5400Pa
Junction box protection degree	IP67	IP67
Connectors	MC4 comp.	MC4 comp.
Bypass diodes	2	3
Max reverse current	15A	20A
Glass thickness	3.2mm	3.2mm
Weight	12kg	19kg