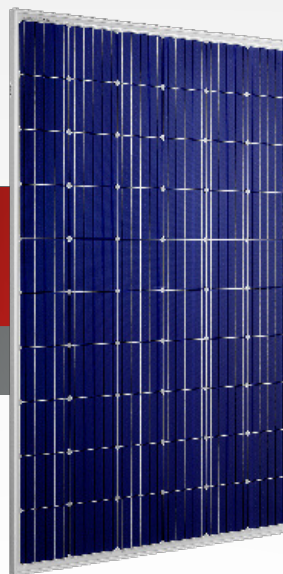


PV Modules [ACCESSORIES]

Code

PV Modules: 015834 (modulo 160Wp)
016390 (modulo 300Wp)



Caratteristiche prodotto PV 160 Wp Module



160 Wp power



Standard busbars



1480x670x30mm

[eng] Product features



Polycrystalline



Aluminium frame

[fra] Caractéristiques du produit



36 Cells



Certified according to IEC 61215
and IEC 61730 standards

Caratteristiche prodotto PV 300 Wp Module



300 Wp power



5 busbars



1644x992x36mm

[eng] Product features



Monocrystalline



Aluminium frame

[fra] Caractéristiques du produit



60 Cells

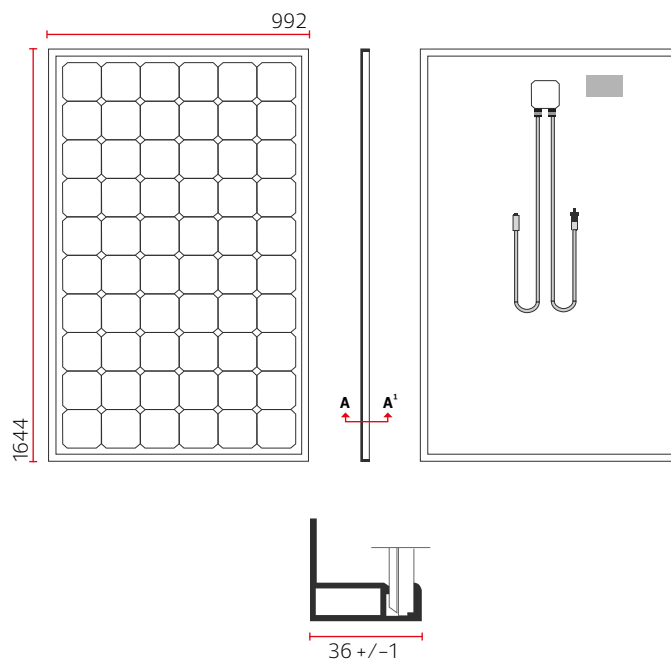
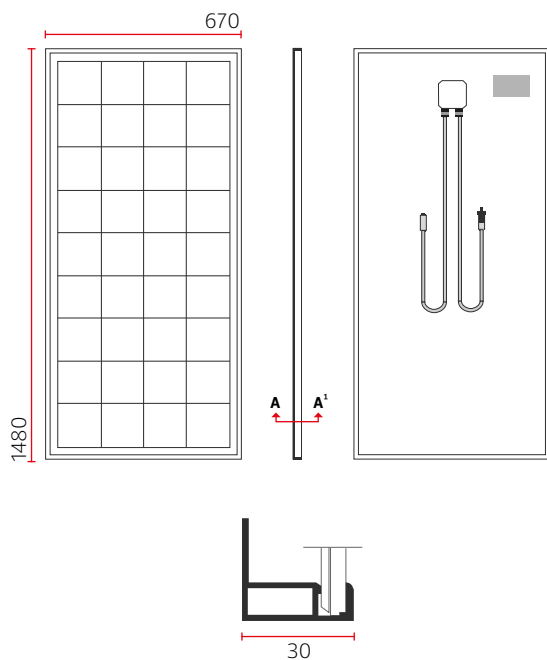


Certified according to IEC 61215
and IEC 61730 standards

Dimensioni (mm)

[eng]
Dimensions (mm)

[fra]
Dimensions (mm)



Caratteristiche elettriche

[eng]
Electrical specifications

[fra]
Fonctionnalités électroniques

| | WP-FV 160 | WM-FV 300 |
|--------------------------------|------------|------------|
| Max power Pmax | 160Wp | 300Wp |
| Max power voltage Vmp | 18,65V | 32,64V |
| Max power current Imp | 8,59A | 9,19A |
| Open circuit voltage Voc | 23,00V | 39,24V |
| Short circuit current Isc | 9,18A | 9,74A |
| Min warranted power Pmin | 160,00Wp | 300,00Wp |
| Working tolerance | -0/+3Wp | -0/+10Wp |
| Module efficiency | 16,10% | 18,40% |
| NOCT | 45 ± 3 °C | 45 ± 3 °C |
| Max system voltage | 1000V | 1000V |
| Pmax temperature coefficient | -0,36% /°C | -0,40% /°C |
| Voc temperature coefficient | -0,26% /°C | -0,34% /°C |
| Isc temperature coefficient | 0,06% /°C | 0,03% /°C |
| Mechanical load | 5400Pa | 5400Pa |
| Junction box protection degree | IP67 | IP67 |
| Connectors | MC4 comp. | MC4 comp. |
| Bypass diodes | 2 | 3 |
| Max reverse current | 15A | 20A |
| Glass thickness | 3.2mm | 3.2mm |
| Weight | 12kg | 19kg |